

Features & Benefits

Low-Profile Bike Rack

Features:

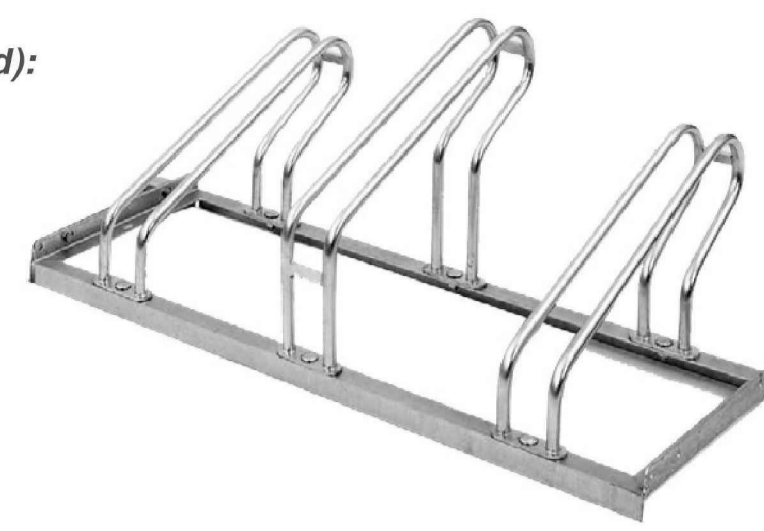
- Flat free bike rack made from hot-dip galvanized steel.
- Manufactured in Germany.
- Up down design stops bike handle bars clashing when positioned upright.
- Assembly bolts are included.
- Install fixings can also be supplied (110mm coachscrews recommended)(not included).

Benefits:

- Ideal for storing bicycles outside commercial properties, schools or universities.
- Arrives flat packed and can be assembled in minutes.
- 2 year warranty.
- Ideal for storing bicycles outside commercial properties, schools or universities.
- Versatile bike capacity options available to choose from.



Recommended fixings (not included):



Suitable for:

Commercial



School / University

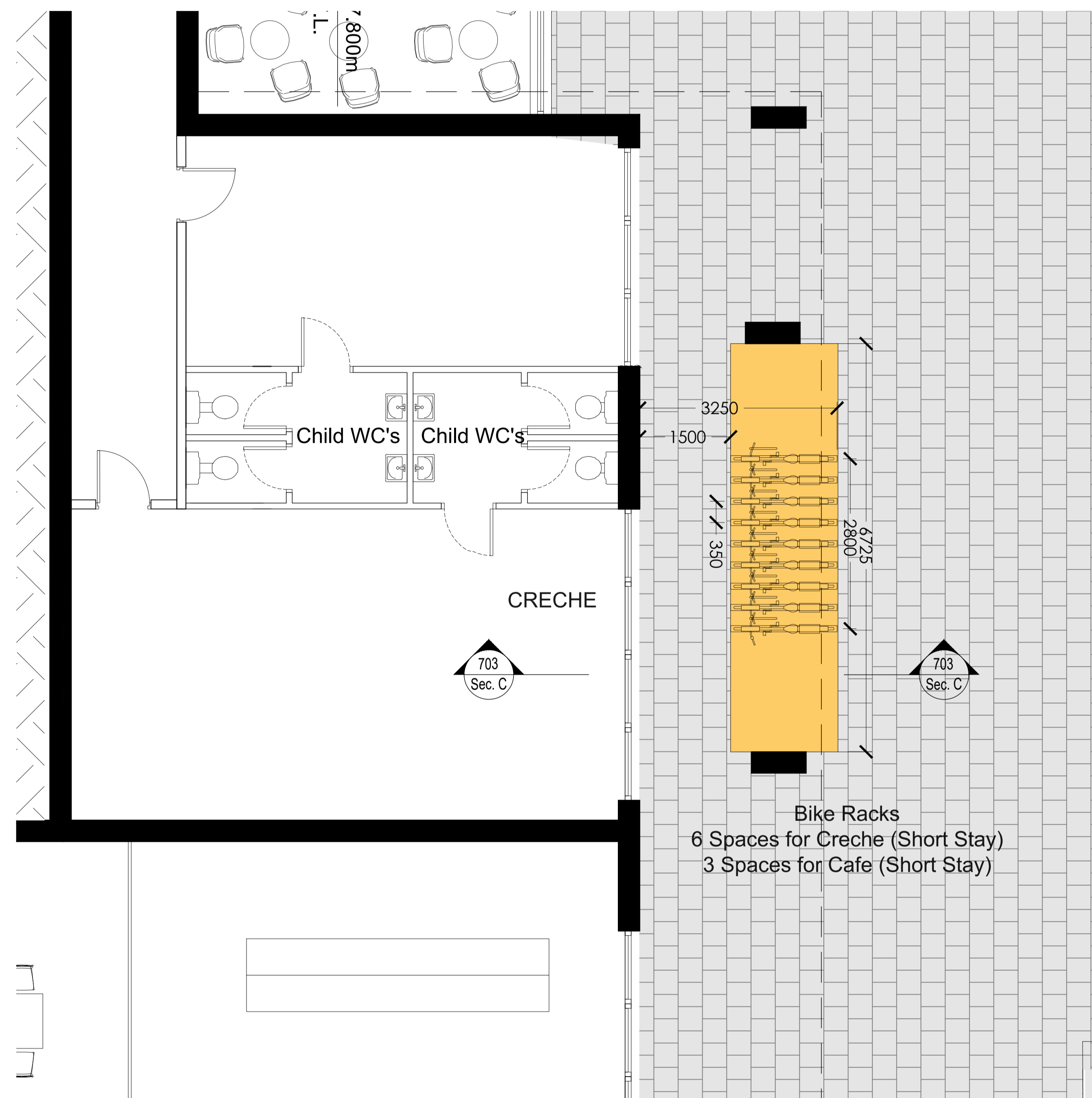


www.pittman.ie

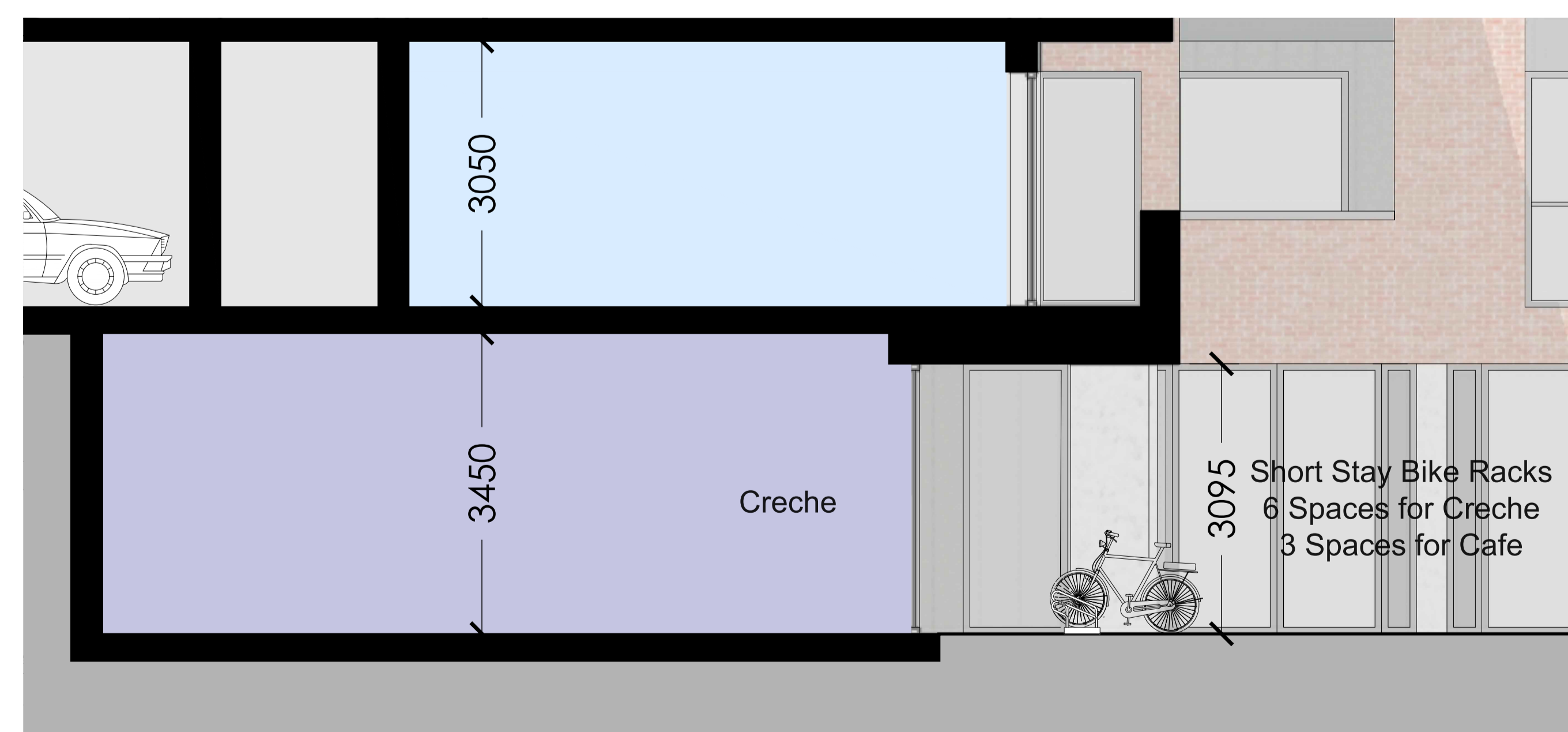
sales@pittmantraffic.com

(01) 531 2444

Single Tier Bike Specification



Creche + Cafe Bike Racks - Lower Ground Floor
Scale 1: 50 @A0



Creche + Cafe Bike Racks - Section C-C
Scale 1: 50 @A0

BICYCLE PARKING

	No. Bikes
Residential Bikes	535
Residential Large Bikes	20
Residential Cargo Bikes	10
Creche (Long Stay)	6
Cafe (Long Stay)	3
Creche (Short Stay)	6
Cafe (Short Stay)	3
Total	583

LEGEND:

	CAFE + CRECHE BIKE RACKS (SHORT STAY)
--	---------------------------------------

1. ALL DIMENSIONS IN MILLIMETERS
2. WARDROBES SHOWN IN BEDROOM AREAS ARE NOT COUNTED TOWARD TOTAL STORAGE AREA
3. FURNITURE AND FITTINGS SHOWN ARE INDICATIVE

NOTE: - DO NOT SCALE. USE FIGURED DIMENSIONS ONLY
- THIS DRAWING IS TO BE READ IN CONJUNCTION WITH ALL RELEVANT SPECIFICATIONS AND DRAWINGS
- ALL DIMENSIONS TO BE CHECKED ON SITE
- IN THE EVENT OF ANY DISCREPANCIES BETWEEN DRAWINGS THE CONTRACTOR IS TO INFORM THE ARCHITECT IMMEDIATELY

REV	DATE	DESCRIPTION	DESIGN	CHECKED	APPROVED
1	12.12.2021	Issued for the Application Consultation	AC	AC	AW
2	12.12.2021	Issued for Approval	AC	AC	AW
3	12.12.2021	Issued for Construction	AC	AC	AW
4	12.12.2021	Issued for Handover	AC	AC	AW
5	12.12.2021	Issued for Occupation	AC	AC	AW
6	12.12.2021	Final As-Built	AC	AC	AW