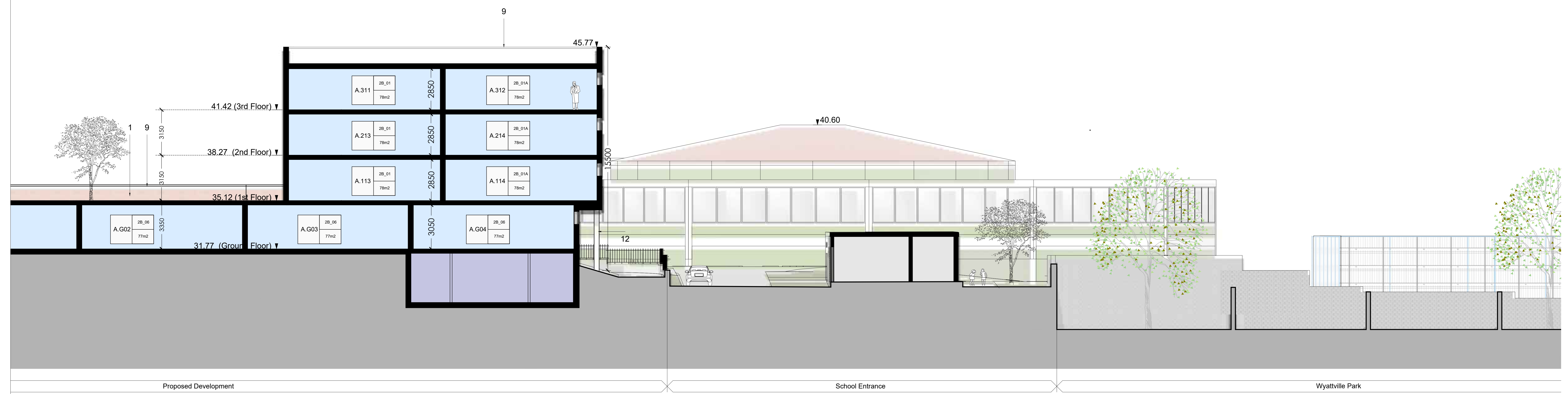
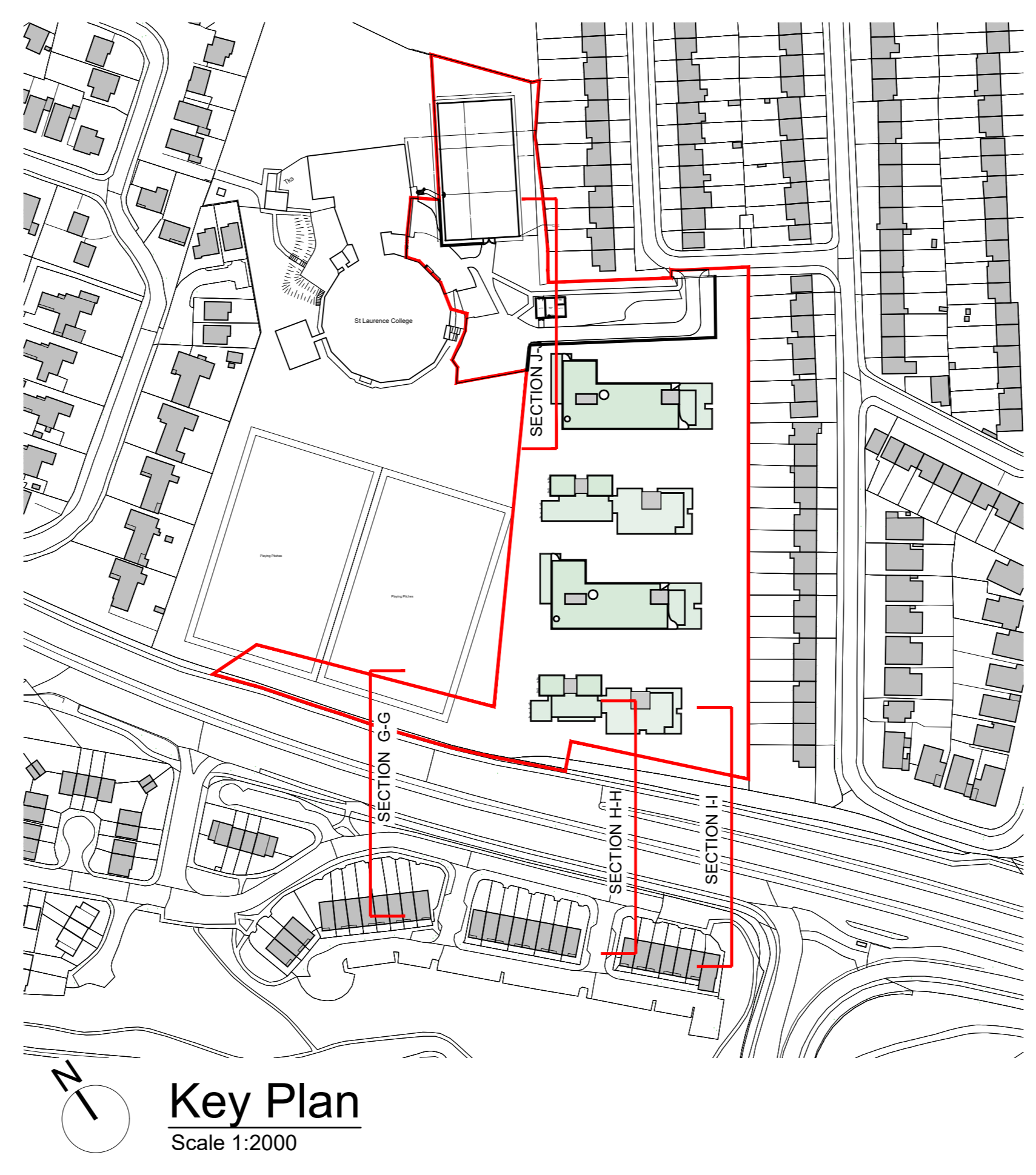


NOTE: - DO NOT SCALE. USE FIGURED DIMENSIONS ONLY.
 - THIS DRAWING IS TO BE READ IN CONJUNCTION WITH ALL RELEVANT SPECIFICATIONS AND DRAWINGS.
 - ALL DIMENSIONS TO BE CHECKED ON SITE.
 - IN THE EVENT OF ANY DISCREPANCY BETWEEN DRAWINGS THE CONTRACTOR IS TO ASK THE ARCHITECT IMMEDIATELY.

REV.	DATE	DESCRIPTION	DESIGN	CHECK	DATE
1	12/2023	Issue for Pre-Application Consultation	OC	OC	12/2023
2	1/2024	Issue for Information	OC	OC	1/2024
3	1/2024	Issue for Pre-application	OC	OC	1/2024
4	1/2024	Issue for Information	OC	OC	1/2024
5	1/2024	Issue for Information	OC	OC	1/2024
6	1/2024	Issue for Information	OC	OC	1/2024
7	1/2024	Issue for Information	OC	OC	1/2024
8	1/2024	Issue for Information	OC	OC	1/2024
9	1/2024	Issue for Information	OC	OC	1/2024
10	1/2024	Issue for Information	OC	OC	1/2024
11	1/2024	Issue for Information	OC	OC	1/2024
12	1/2024	Issue for Information	OC	OC	1/2024

- ALL DIMENSIONS IN MILLIMETERS
 - FOR DETAILS OF STREET LIGHTING REFER TO DKP LIGHTING REPORT
- INDICATES FINISHED FLOOR LEVEL
- LEGEND:
- ONE BEDROOM APARTMENTS
 - TWO BEDROOM APARTMENTS
 - THREE BEDROOM APARTMENTS
 - SITE BOUNDARY

- MATERIALS LEGEND
- Brick type A Finish
 - Brick type B Finish
 - Brick type C Finish
 - Standing Seam Metal Cladding
 - Glazed Panel
 - Glazed Sliding Door
 - Insulated metal infill panels
 - Insulated metal panel doors
 - Powder coated metal parapets
 - Powder coated metal railings
 - Powder coated balcony fascia
 - Polished concrete



SECTION J-J (BUILDING A)
 Scale 1:100@A0