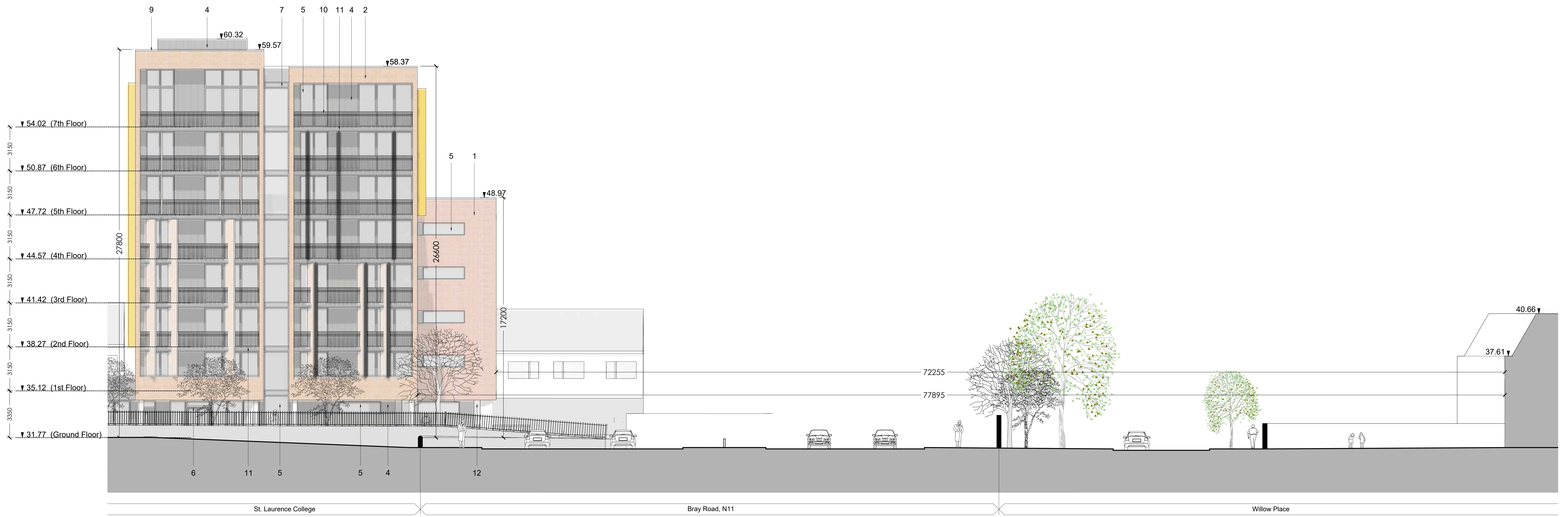
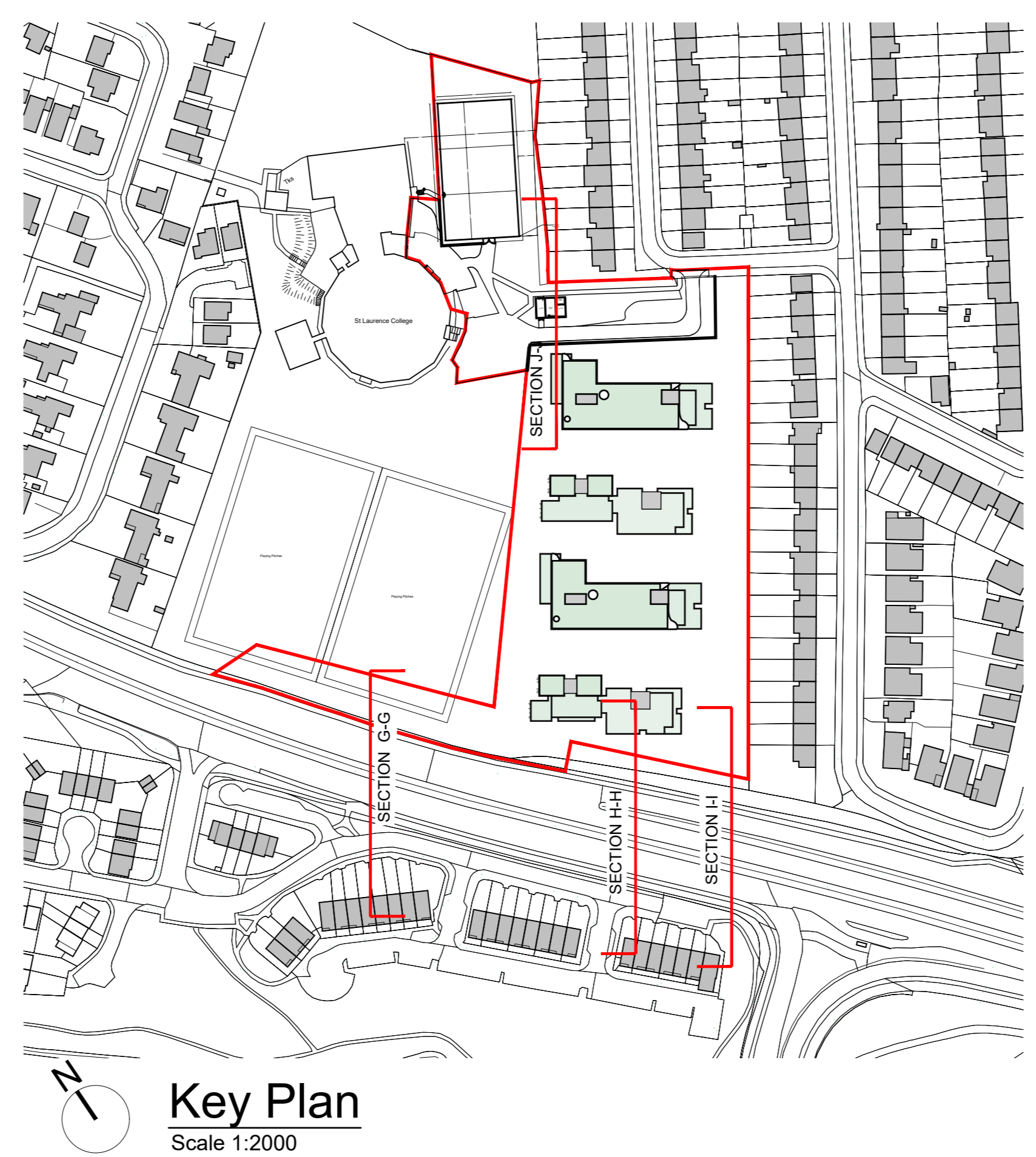


NOTE: - DO NOT SCALE. USE FIGURED DIMENSIONS ONLY.
 - THIS DRAWING IS TO BE READ IN CONJUNCTION WITH ALL RELEVANT SPECIFICATIONS AND DRAWINGS.
 - ALL DIMENSIONS TO BE CHECKED ON SITE.
 - IN THE EVENT OF ANY DISCREPANCY BETWEEN DRAWINGS THE CONTRACTOR IS TO ASK THE ARCHITECT IMMEDIATELY.

REV.	DATE	DESCRIPTION	DESIGN	CHKD	APP'D
1	12/2021	Issue for Pre-Application Consultation	OC	OC	PH
2	12/2021	Issue for Information	OC	OC	PH
3	02/2022	Issue for Information	OC	OC	PH
4	02/2022	Issue for Information	OC	OC	PH
5	02/2022	Issue for Information	OC	OC	PH
6	02/2022	Issue for Information	OC	OC	PH
7	02/2022	Issue for Information	OC	OC	PH
8	02/2022	Issue for Information	OC	OC	PH
9	02/2022	Issue for Information	OC	OC	PH
10	02/2022	Issue for Information	OC	OC	PH
11	02/2022	Issue for Information	OC	OC	PH
12	02/2022	Issue for Information	OC	OC	PH

- MATERIALS LEGEND**
- 1 Brick type A Finish
 - 2 Brick type B Finish
 - 3 Brick type C Finish
 - 4 Standing Seam Metal Cladding
 - 5 Glazed Panel
 - 6 Glazed Door
 - 7 Insulated metal infill panels
 - 8 Insulated metal panel doors
 - 9 Powder coated metal parapets
 - 10 Powder coated metal railings
 - 11 Powder coated balcony fascia
 - 12 Polished concrete



SECTION G-G (BUILDING D)
Scale 1:100 @A0